

# MONTHLY MEMBERSHIP PROGRESS REPORT

District 325 L

Results as of: 5/31/2024

GMT:

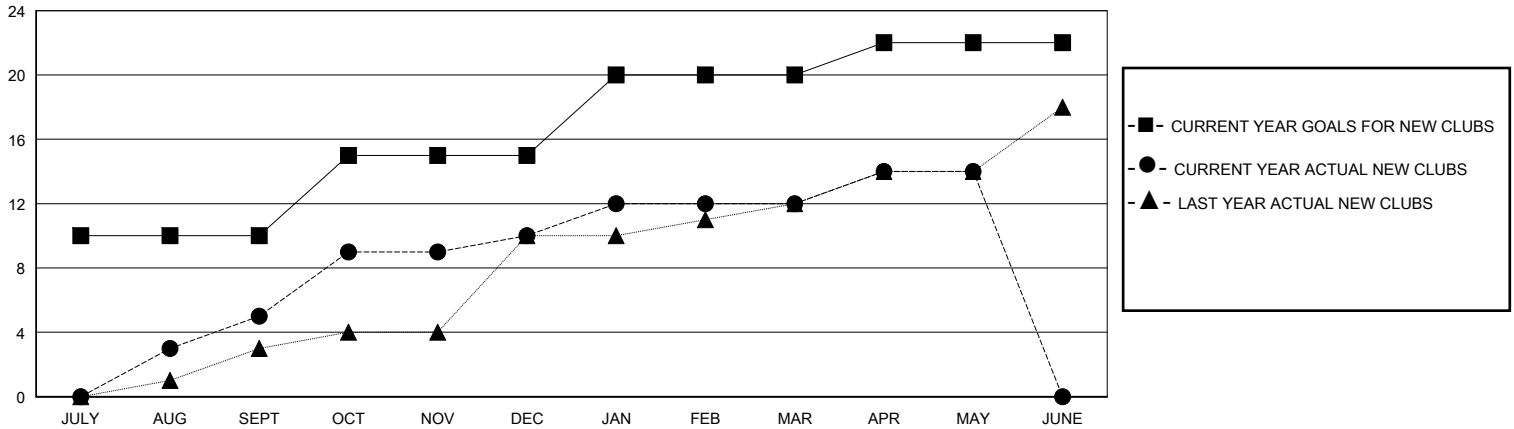
LOCATION NEPAL

GMT CA

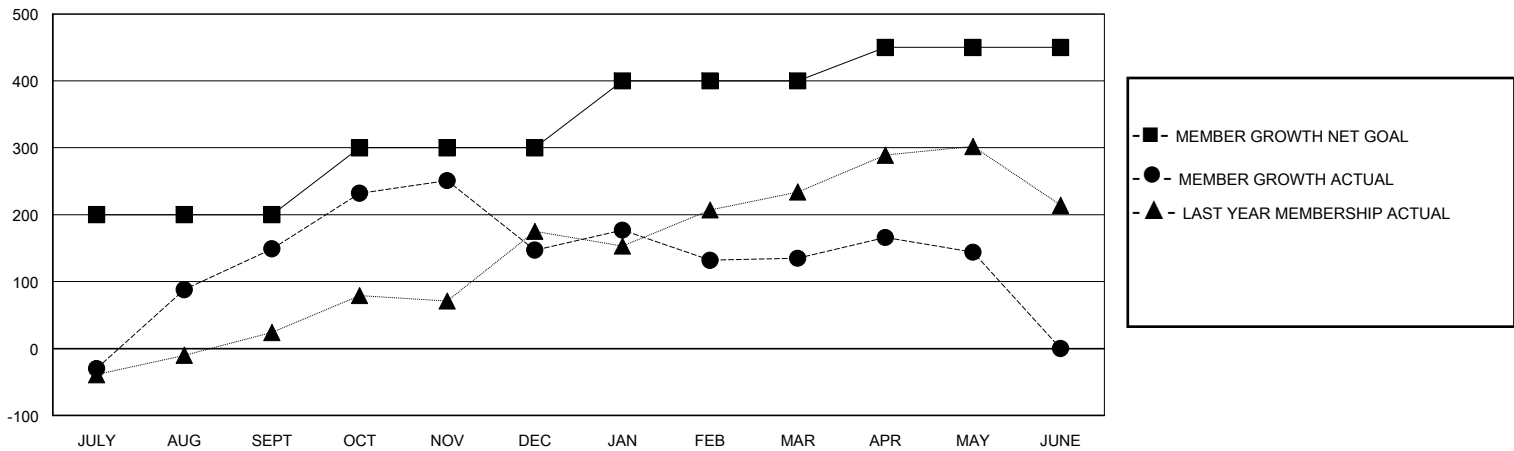
Clubs			
RESULTS FOR 2023-2024			
QUARTER	NEW CLUB GOAL	NEW CLUBS	DROPPED CLUBS
JULY/AUG/SEPT	10	5	2
OCT/NOV/DEC	5	5	5
JAN/FEB/MAR	5	2	3
APR/MAY/JUNE	2	2	1

Members			
RESULTS FOR 2023-2024			
QUARTER	MEMBER GROWTH NET GOAL	MEMBER GROWTH ACTUAL	DROPPED MEMBERS ACTUAL (including transfers)
JULY/AUG/SEPT	200	271	115
OCT/NOV/DEC	100	174	171
JAN/FEB/MAR	100	139	127
APR/MAY/JUNE	50	52	42

GOALS AND ACTUAL NEW CLUBS CUMULATIVE



GOALS AND ACTUAL MEMBERS CUMULATIVE



DROPPED CLUBS: 11	
<b>DROPPED MEMBERS</b>	
DECEASED	2
CLUB CANCELLED	172
OTHER	279
<b>TOTAL</b>	<b>453</b>

71 CLUBS OF 115 ADDED 1 OR MORE NEW MEMBERS

GENDER DISTRIBUTION	
MALE	1,809 (70.39%)
FEMALE	752 (29.26%)

[CLICK HERE FOR CUMULATIVE MEMBERSHIP DATA](#)

TOTAL FAMILY UNIT MEMBERS	1,824
FAMILY MEMBERS PAYING HALF DUES	1,258